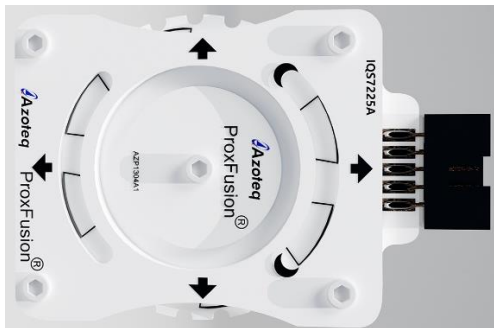




IQS7225AEV02 Quick Start Guide



- Plug module into CT210A using ribbon cable
- Connect CT210A to PC
- Download IQS7225A GUI from Azoteq website and install
- Run GUI
- Click “START STREAMING”
- Click “ACK RESET”
- Click “USER SETTINGS”
- Click “L-sensing” button to load the header file

Evaluate

Rotate dial and observe Encoder Angle changes.
Press the centre dial at the top, bottom, left and right and observe the Touch states on CH2-CH5